

MANDATORY DISCLOSURE

I. NAME OF THE INSTITUTION:

Institute of Technology Korba
Govt. Polytechnic Campus, Rungara,
Balco Nagar, Korba (C.G.),
TEL: +91-7759-217435 Fax: 07759-241449(PP)
Email: korbait@rediffmail.com
Website: www.itkorba.com
Office hours: 10.30 a.m to 5.30 p.m
Academic hours: 7.30 a.m to 1.50 p.m
Nearest Railway Station : Korba Railway Station(16 Km)

II. NAME & ADDRESS OF THE DIRECTOR

Dr. B.S. Chawla,
Principal & Member Secretary
Institute of Technology Korba Society
TEL: +91-7759- 217435 Fax: 07759-241449(PP)
Mobile: 094241-44099
Email: korait@rediffmail.com

III. NAME OF THE AFFILIATING UNIVERSITY

Chhattisgarh Swami Vivekanand Technical University, Bhilai

IV. GOVERNANCE

Name of the society running the institution
Institute of Technology Korba Society

Members of the Board and their brief background

1. Shri Hemchand Yadav

Chairman,
Minister of Higher Education,
Technical Education,
Manpower Planning,
Science & Technology Dept.
C.G. Govt., Raipur

2. Shri Chandrashekhar Sahu

Minister, C.G. Govt.
Agriculture, Animal Husbandry, Pisciculture and Labour Departments,
Distt. Korba, C.G. Govt.

3. Shri Jai Singh Agrawal

M.L.A. Korba
Distt-Korba

4. **Shri Narayan Singh, IAS**
Secretary, Technical Education,
Govt of C.G. , Technical Education, Raipur

5. **Shri. K.Subramaniam, IFS**
Commissioner cum Director,C.G.Technical Education,
Raipur(C.G.)

6. **Shri R.P.S. Tyagi, IAS**
District Collector, Korba (C.G.)

7. **Shri S.N. Agrawal**
Chief Engineer (Generation)
CSEB (West), Korba (C.G.)

8. **Shri. S. Guharoy**
G. M. SECL
Korba (C.G.)

9. **Shri S.K.Roy**
G. M. NTPC
Korba (C.G.)

10. **Shri Gunjan Gupta**
President, Balco Korba (C.G.)

11. **Shri Kanti Vishwas**
Vice President
Lanco Amarkantak Power Pvt. Ltd.
Korba (C.G.)

12. **Shri A.K. Chaturvedi**
Director, Corporate Affairs
Prakash Industries Ltd.
Bilaspur (C.G.)

13. **Shri M.S.Ghuge**
Regional Officer, AICTE
Central Regional Office,Bhopal (M.P.)

14. **Dr.B.S.Chawla**

Principal & Member Secretary,
Institute of Technology, Korba(C.G.),
Additional Director. DTE, Raipur

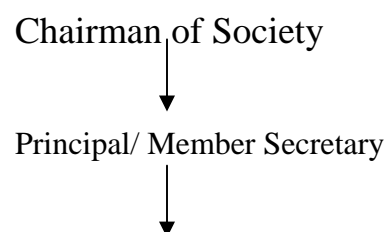
Members of Academic Advisory Body:

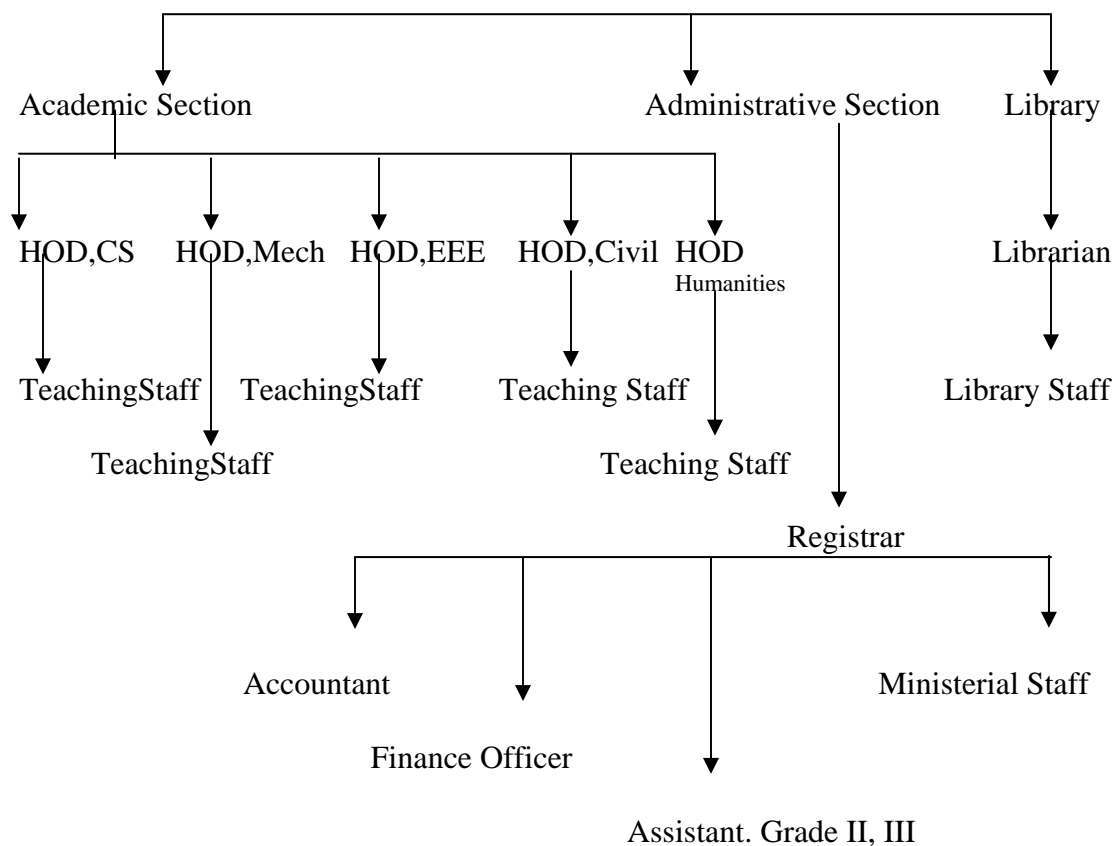
Academic Advisory Body consists of Principal, Dean Academic and all the department heads.

Frequency of the Board Meetings

The board meets quarterly to take a review of the development and academic activities planned and their implementation.

Organizational Chart & Processes





Nature and Extent of involvement of faculty and students in academic affairs/ improvements

As a part of monthly routine, Principal and senior faculty regularly interact formally and informally with the students and take feedback regarding academic affairs of the institute. The students are encouraged to point out shortcomings if any, which are discussed in the faculty meeting and suggestions are sought for improvements.

Mechanism/Norms & Procedure for democratic/good Governance

The academy is governed by the Principal and supported by Academic members, which meet regularly for the proper governance of the Institute.

Grievance redressal mechanism for faculty, staff and students:

A grievance cell is constituted for faculty, staff and students. The grievance cell for faculty and staff consists of Dean Academic and Registrar. For students, there is Antiragging committee consisting of staff representation from every department.

V. PROGRAMMES

Name of the Programmes approved by the AICTE

1. B.E. Computer Science
2. B.E. Electrical & Electronics Engg.
3. B.E. Mechanical Engg.
4. B.E. Civil Engg.

Number of sanctioned seats in each branch : 60

Duration : Four Years (4 yrs.) in B.E.

Cut off mark/rank for admission:

A merit list prepared by Directorate of Technical Education Raipur, based on PET/AIEEE is made available to the Institution for admission in B.E. Programme.

Campus placement in last three years with minimum salary, maximum salary and average salary :

Not applicable as the first batch of students(batch 2008) in third year now.

VI. FACULTY:

Branch wise list of faculty members:

Permanent Faculty

Visiting Faculty

Contract Faculty

Guest Faculty

Enclosed in Annexure A

Permanent Faculty: Student Ratio:

1 : 15 (Sanctioned strength)

Number of faculty employed and left during the last three years : 15

For each Faculty give a page covering
(Attach separate sheet for each faculty along with photograph/signature)

Enclosed in Annexure B

VII. PROFILE OF DIRECTOR/PRINCIPAL WITH QUALIFICATIONS, TOTAL EXPERIENCE, AGE AND DURATION OF EMPLOYMENT AT THE INSTITUTE CONCERNED:

The profile of the Principal and all the faculty members is enclosed under Annexure B.

VIII. FEE :

Details of fee, charged by Institution per semester.

Details of fee, as approved by State fee Committee, for the Institution.

Tuition fee approx Rs.21,150/- per sem

Revision in the fee structure is enclosed under Annexure C

Time schedule for payment of fee for the entire programme.

Students are asked to deposit fee within a month of admission.

No. of Fee waivers granted with amount and name of students.

14 students were granted fee waiver in session 2008-09 and 16 in session 2009-10. Details enclosed under Annexure F

Number of scholarship offered by the institute, duration and amount

Category	Session 2008-09	Session 2009-10
	Amount(Rs)	Amount(Rs)
ST	52920.00	406140.00
SC	211680.00	964110.00
OBC	535725.00	1999155.00
Total	800325.00	3369405.00

Estimated cost of boarding and Lodging in Hostels:

S.No	Fee Particulars	Amount(Rs)
1	Hostel caution money(refundable)	500
2	Residential	5000
3	Electricity	1000
4	Water	120
5	Admission	500
6	Study room and sports	300
7	Hostel development fund	800
8	Mess charge	1000
9	Mess caution money(refundable)	3000
	Total	12,200

I

X. ADMISSION

Number of seats sanctioned with the year of approval.

Branch	2008-09	2009-10	2010-11
Civil Engg.	60+06	60+06	60+06
CSE	60+06	60+06	60+06
EEE	60+06	60+06	60+06
Mech. Engg.,.	60+06	60+06	60+06
Total	240+24*	240+24*	240+24*

* 10% Excess Seat TFW Student

Number of students admitted under various categories branch wise each year in the last three years.

Branch	2008-09				2009-10			
	SC	ST	OBC	GEN	SC	ST	OBC	GEN
Civil Engg.	09	06	27	21	12	09	27	18
CSE	09	05	31	17	09	05	14	23
EEE	06	05	31	22	09	10	26	21
Mech. Engg.,.	07	07	31	20	09	10	27	20
Total	31	23	120	80	39	34	94	82
Grand Total	254				249			

Data for session 2010-11 admissions enclosed under Annexure G

Number of applications received during last two years for admission under Management Quota and number admitted.

Branch	2008-09	2009-10	2010-11
Civil Engg.	04	09	09
CSE	07	05	09
EEE	08	09	09
Mech. Engg.,.	08	09	09
Total	27	32	36

Mention the cut-off levels of percentage /merit scores of the candidates admitted for the last three years.

2008-09		2009-10		2010-11	
AIEEE	PET	AIEEE	PET	AIEEE	PET
546904	19857	574047	20349	764612	28802

List of candidates who have applied along with percentage and percentile score for Management quota seats.

Composition of selection team for admission under Management Quota with the brief profiles of members

Management quota consists of wards of persons working in the partner industries of the institute. The industries send the names of students(every industry is allotted some fixed number of seats) according to merit list and only those students are given admission and treated as management quota admissions.

List of candidates who have been offered admission.

Waiting list of the candidates in order of merit to be operative from the last date of joining of the first list candidates. NA

List of the candidates who joined within the date, vacancy position in each category before operation of waiting list. NA

XV. INFORMATION ON INFRASTRUCTURE AND OTHER RESOURCES AVAILABLE

LIBRARY:

Number of books/Titles/Journals available (programme-wise) in Library

S. No	Category	Total books available as on 23/12/2010		Total additions during last two year	
		Total No. of titles	Total No. of Volumes	Total No. of titles	Total No. of Volumes
1	Volumes	411	6000	361	4095
2	Text Books	301	5590	251	3735
3	Reference Books	60	120360	60	310
4	Others	50	50	50	50
	Total	411	6000	361	4095

List of National/International Journals subscribed.

1. Journal of The Geological Society of India
2. Journal of Environmental Science of Engineering
3. CSVTU Research Journal

E-Library facilities

Digital library facility available

LABORATORY:

For each Laboratory

List of Major Equipment/Facilities

Enclosed in Annexure D

List of Experimental Setup

Experimental setup followed as mentioned in the Chhattisgarh Swami Vivekanand Technical University, Bhilai syllabus

COMPUTING FACILITIES:

Number and Configuration of Systems

121 computer systems of Core2 Duo configuration and laptops (of latest configuration) for every department available.

Total number of systems connected by LAN

61

Total number of systems connected to WAN

255 WAN points can be connected

Internet bandwidth

2Mbps leased line BSNL service

Major software packages available

Matlab, Office, Visual Studio, Codegear, AutoCAD, Tinapro

Special purpose facilities available

Class Rooms Workshop and Others

List of facilities available in workshop

Carpentry, Smithy, Welding, Machine Shop

Games and Sports Facilities

Equipments of number of sports are available in the college and girls hostel.

Yearly Sports events are conducted during the month of January or February.

Extra Curriculum Activities

Number of extra curricular activities are conducted for all round development of the students like essay writing, debate, technical quiz, poster making, photography, etc.

Soft Skill Development Facilities

There is regular interaction with Professionals in industries, senior faculty and visitors & personality development programmes are being conducted.

Number of Classrooms and size of each

Enclosed in Annexure E

Number of Tutorial rooms and size of each

Number of laboratories and size of each

Details of Laboratories and Workshops of Departments in the Institution.

S. No.	Name of Laboratory/Workshop	Carpet Area sqm.	S. No.	Name of Laboratory/Workshop	Carpet Area sqm.
Dept. 1 : Electrical & Electronics			Dept. 4 : Civil Engg		
1.	Electrical Machine Lab	111	1.	Surveying I & II Lab	Under development
2.	Electronics I Lab	129.75	2.	Engg Geology Lab	
3.	Electronics II Lab	51			
Dept. 2: Computer Science & Engg.					
1.	Computer lab	102			
Dept. 3 : Mechanical Engg					
1	Manufacturing Practice Lab	91.845			
2	EM Lab	77.25	Other		
3	Carpentry	77.25	1.	Physics	77.25
4	Smithy	69.08	2.	Chemistry	77.25
5	Welding	90.118			
GRAND TOTAL		799.293	GRAND TOTAL		154.5

Number of drawing halls and size of each

One drawing hall of size 149.03 sq.m available.

Number of Computer Centers with capacity of each

One Computer Center of area 102 sq.m available.

Central Examination Facility, Number of rooms and capacity of each

Same as Annexure E

No. of boys hostel and their capacity

Boys hostel facility is not available.

No. of girls hostel and their capacity

One girls hostel available and around 50 students are availing the facility.

Medical facilities

First aid facility is available. In case of emergency, the partner industries like NTPC, BALCO extend their facilities.

Student insurance

This facility is not available.

Major software packages available

Matlab, Office, Visual Studio, Codegear, AutoCAD, Tinapro

Special purpose facilities available

Class Rooms Workshop and Others

List of facilities available in workshop

Carpentry, Smithy, Welding, Machine Shop

Games and Sports Facilities

Equipments of number of sports are available in the college and girls hostel.
Yearly Sports events are conducted during the month of January or February.

Extra Curriculum Activities

Number of extra curricular activities are conducted for all round development of the students like essay writing, debate, technical quiz, poster making, photography, etc.

Soft Skill Development Facilities

There is regular interaction with Professionals in industries, senior faculty and visitors & personality development programmes are being conducted.

Number of Classrooms and size of each

Enclosed in Annexure E

Number of Tutorial rooms and size of each --

Number of laboratories and size of each

Details of Laboratories and Workshops of Departments in the Institution.

S. No.	Name of Laboratory/Workshop	Carpet Area sqm.	S. No.	Name of Laboratory/Workshop	Carpet Area sqm.
Dept. 1 : Electrical & Electronics			Dept. 4 : Civil Engg		
1.	Basic Electrical Machines Lab	109.90	1.	Fluid Mechanics Lab	8.75*7.45=65.19
2.	Basic Electronics /Digital Electronics /Analog Electronics Lab	50.25	2.	Surveying Field Work	
			3.	Material Testing Lab	
			4.	Fluid Mechanics Lab	
3.	Electric Circuits Lab / Electrical Measurements & Measuring Instrument Lab	129.75	5.	Surveying Field Work	
			6.	Civil Engineering Drawing	
			7.	Engineering Geology Lab	
			8.	Transportation (Bridge And Dams Models))	
Dept. 2: Computer Science & Engg.					
1.	Computer lab	102			
Dept. 3 : Mechanical Engg					
1	Material Testing Lab	77.25			
2	Manufacturing	202.5	1.	Physics	77.25

	Practice Lab/ Workshop (All equipments are of Govt. Polytechnic Korba)				
3	Thermodynamics Lab/ICE	77.25	2.	Chemistry	77.25
4	Kinematics of Machines Lab/EM	77.25			
GRAND TOTAL		434.25	GRAND TOTAL		154.5

Number of drawing halls and size of each

One drawing hall of size 149.03 sq.m available.

Number of Computer Centers with capacity of each

One Computer Center of area 102 sq.m available.

Central Examination Facility, Number of rooms and capacity of each

Same as Annexure G

No. of boys hostel and their capacity

Boys hostel facility is not available.

No. of girls hostel and their capacity

One girls hostel available and around 50 students are availing the facility.

Medical facilities

First aid facility is available. In case of emergency, the partner industries like NTPC, BALCO extend their facilities.

Student insurance

This facility is not available.